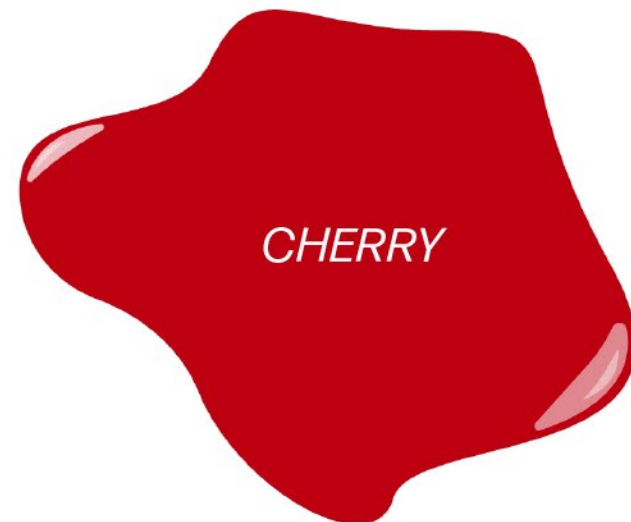
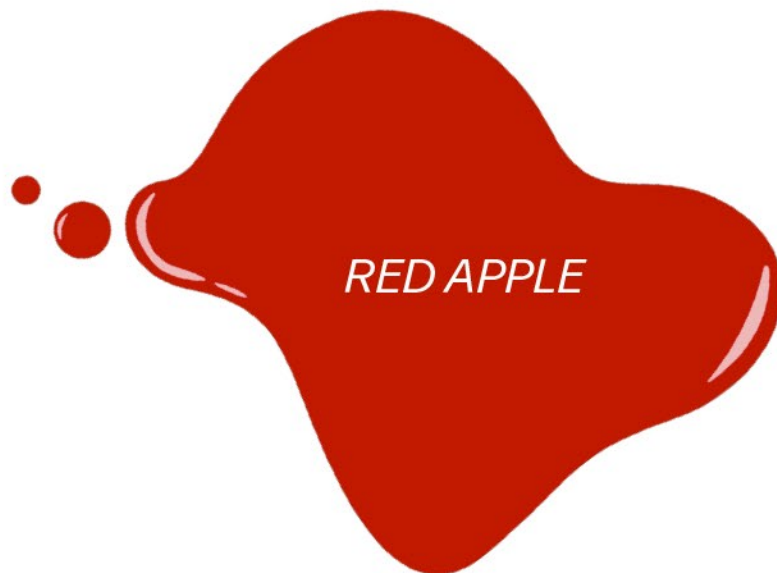
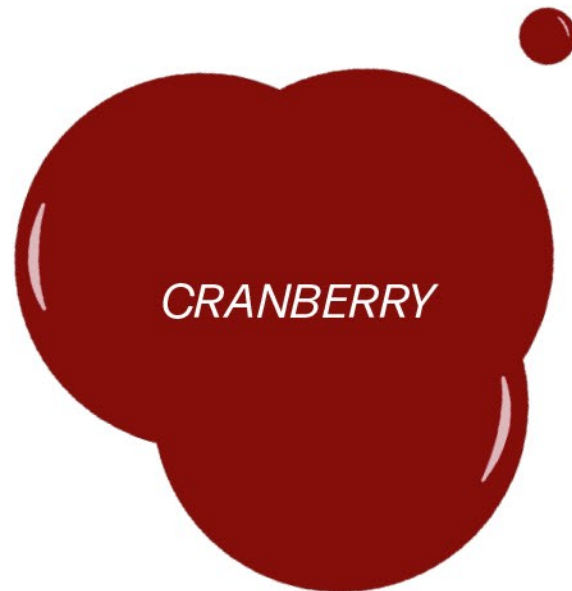
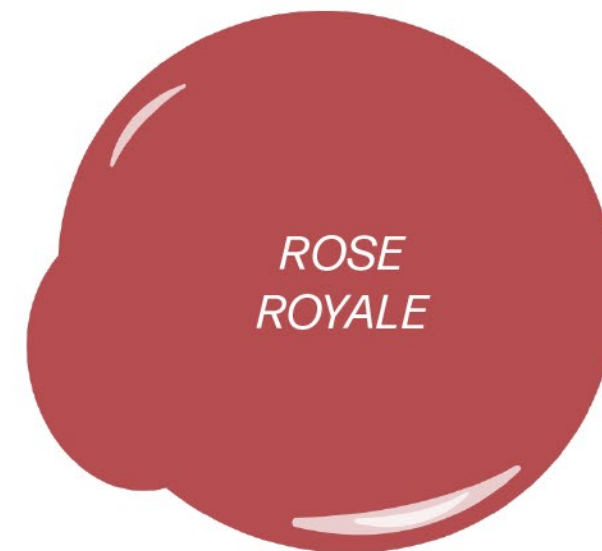


Lips



Lips



Lips



BLOSSOM



ROUGE




HENNA



*SUBDUED
SIENNA*

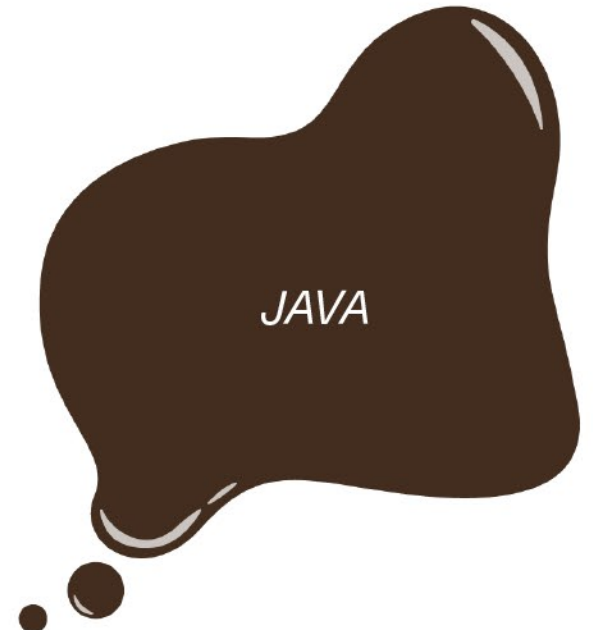
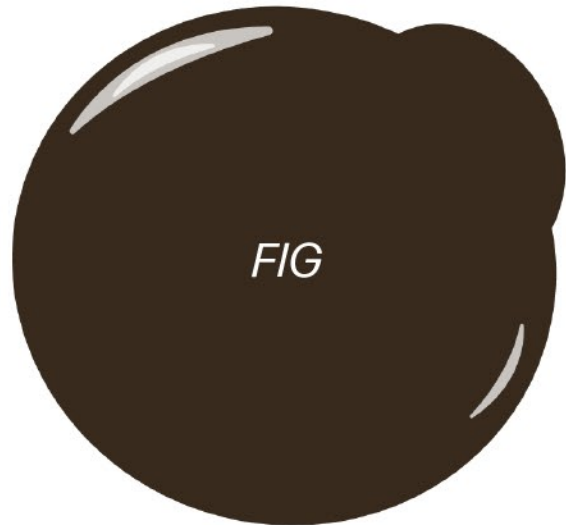


*PEACH
VEIL*



*COTTON
CANDY*

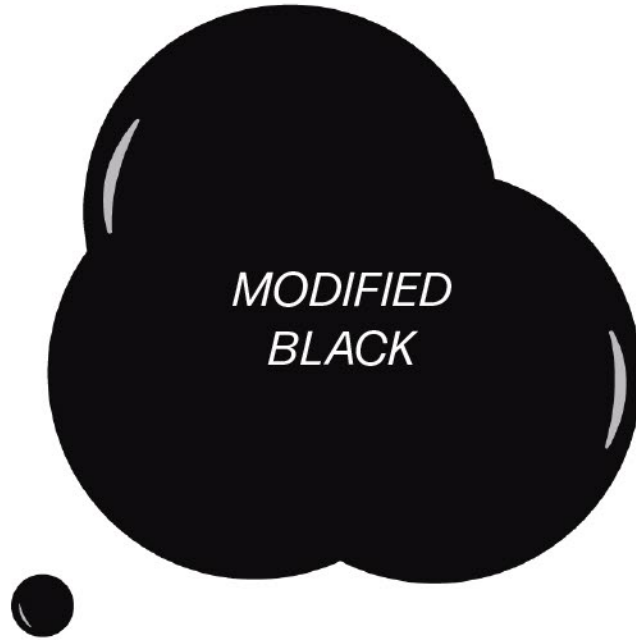
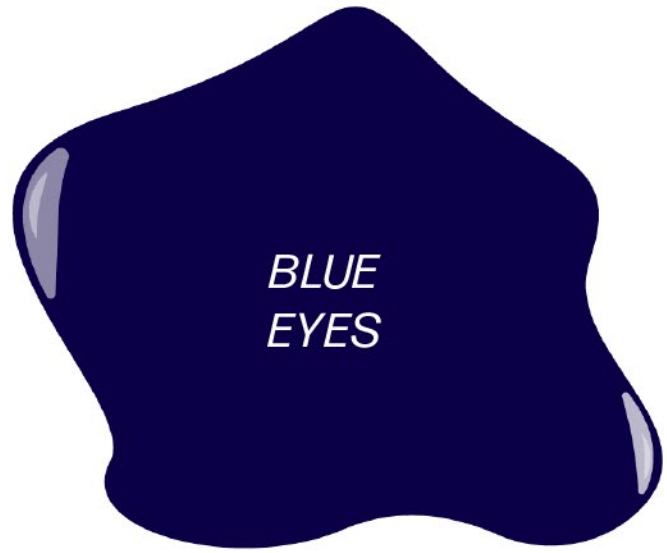
Brows



Brows



Eyeliners



Modifiers

A large, irregular orange shape with a glossy finish and a small white highlight on the left side. A small orange circle is positioned at the bottom left of the shape.

*ORANGE
PEEL*

A large, irregular orange shape with a glossy finish and a small white highlight on the left side.

*NAVEL
ORANGE*